



MORAVIAN
UNIVERSITY



ΑΣΑ • ΑΣΤ • ΣΣΣ • ΖΤΑ

PANHELLENIC
SORORITY RECRUITMENT

Spring 2025



Table of Contents

INTRODUCTION

Meet Your Recruitment Counselors.....4
 Recruitment Schedule6
 Tips for a Successful Recruitment8
 Benefits of the Sorority Experience9

SORORITIES

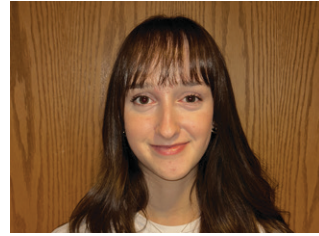
Alpha Sigma Alpha.10
 Alpha Sigma Tau11
 Sigma Sigma Sigma12
 Zeta Tau Alpha13

CONCLUSION

Participation Requirements & Expectations14
 Important Terminology15



Meet Your Recruitment



ASHLEY BOTTO '26

Milford, New Jersey

Psychology, Early Childhood Education Minor

"In no way is it easy to try new things! Pushing yourself to try something is the best way to find new opportunities, experiences, and so much more."



KATIE DUFFY '26

Bethlehem, Pennsylvania

Psychology

"I joined Greek Life for the endless memories, amazing friendships that are formed amongst sisters, and the opportunity to help out in the community."



GIGI FIGUEROA '27

Easton, Pennsylvania

Nursing

"Be open and explore all of your options. Be yourself so you can see where you would feel most at home!"



KAYLEE FLURER '27

Kunkletown, Pennsylvania

Health Science - Pre-Physical Therapy, Public Health Minor

"I joined Greek Life to further my campus involvement and meet like-minded people."

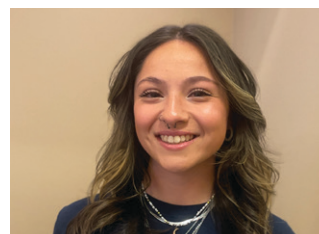


GRACE GAROFALO '27

Glen Gardner, New Jersey

Graphic Design

"My favorite part of Greek Life is the relationships I have made within my chapter and with members of other sororities."



EMILIE MCCOMB '27

Bensalem, Pennsylvania

Sociology, Psychology Minor

"Be yourself, take chances, and keep an open mind because everyone is welcoming!"

Counselors



CAITLIN MCCORMICK '27

Center Valley, Pennsylvania

Biology, Public Health Minor

"My favorite part of Greek Life is when we spend time with each other. Have fun and be yourself!"



DEVON NOONAN '27

Ridgefield, Connecticut

Graphic and Interactive Design, Communications Minor

"I joined Greek Life for a sense of community within Moravian and to gain friendships and experiences that would last a lifetime."



ELLY ROTHROCK '27

Deep River, Connecticut

Health Sciences Pre-Athletic Training

"Make sure to talk about your interests and have conversations that you feel are valuable. I remember having great conversations with members across all chapters."



Recruitment Schedule

FRIDAY, JANUARY 3-TUESDAY, JANUARY 21

Register Online

moravian.edu/greeklife

Interested students must register to participate in the process.

TUESDAY, JANUARY 21

Recruitment Orientation

9:45 p.m. via Zoom

Interested students are expected to attend to learn more about the process and expectations, as well as meet some of the sorority members and learn more about each of the chapters. The Zoom link will be sent to registered students on Tuesday evening.

FRIDAY, JANUARY 24

Round 1: Open Houses

6:30 p.m.-9:30 p.m.

PPHAC and Chapter Houses

PNMs will be divided into four groups and escorted by two recruitment counselors to each of the sorority houses in rotation. Each party will last 30 minutes. PNMs attend four houses.

SATURDAY, JANUARY 25

Round 2: Philanthropy Parties

6:30 p.m.-9:30 p.m.

PPHAC

PNMs will learn more about chapters' philanthropic efforts and become more acquainted with members. Upon arrival, PNMs will receive their schedule from recruitment counselors. Each party will last 45 minutes. PNMs attend three parties or the maximum number to which they were invited.

SUNDAY, JANUARY 26

Preference Parties

12:45 p.m.-3:30 p.m.

PPHAC

PNMs will spend more time with members of chapters and get to know the organizations better. Upon arrival, PNMs will receive their schedule from recruitment counselors. Each party will last 60 minutes. PNMs attend two parties or the maximum number to which they were invited. PNMs will complete their bid preference card following their last party. PNMs rank the groups whose preference party they attended and would accept a bid from.

Bid Day

7:00 p.m.

PPHAC, Sally, and Chapter Houses

PNMs receive bid cards and sign their bid acceptance. After accepting, PNMs will connect with their chapter for a celebration!



What to Wear



WHAT TO WEAR ON FRIDAY

Casual and put together. No sweats or hoodies. Jeans or leggings are fine. You will be walking to each chapter house. Boots, sneakers, and comfortable walking shoes are recommended.



WHAT TO WEAR ON SATURDAY

Business casual: Nice jeans or pants, skirt, dress, romper.



WHAT TO WEAR ON SUNDAY

Cocktail party attire: Dress, skirt or dress pants with a nice top. Heels or nicer dress shoes.



Tips for a Successful Recruitment

BE YOURSELF! Chapters are looking for genuine individuals and the best way to find the best chapter for you is to stay true to yourself.

KEEP AN OPEN MIND! You may decide you like a chapter despite your thoughts when you went into the experience.

MANAGE YOUR TIME! Recruitment is scheduled to begin and end at certain times. Make sure to be on time each day.

WEAR WHAT MAKES YOU COMFORTABLE AND CONFIDENT. The more confident you feel, the more your genuine personality will shine through.

ASK QUESTIONS ABOUT WHAT'S IMPORTANT TO YOU. You want to find the right fit for you, so finding out if your values match the chapter's is a great way to find the right fit.

ENGAGE IN ACTIVE LISTENING! Make eye contact and ask questions! The members want to learn more about you just like you want to learn more about them.

LOOK AT EACH SORORITY AS A WHOLE. What can the chapter offer you? Do not judge an organization by one member.

EACH DAY OF RECRUITMENT IS DESIGNED FOR YOU TO LEARN MORE ABOUT THE CHAPTERS.

A chapter you loved one day might not be your favorite the next. Just because you didn't love a chapter early in the process doesn't mean you should rule it out. There's a reason they invited you back to their event!

DO NOT INTERPRET ANY COMMENT AS ASSURANCE OF A BID. An individual member is not able to know if you will receive a bid.

BE KIND AND COURTEOUS TO OTHER PNMS. You are all in the same position. This is a great opportunity to get to know others.

ENJOY THE EXPERIENCE! This is your recruitment experience and your decision!



Benefits of the Sorority Experience

SORORITY PROVIDES COMMUNITY

Finding a **community** at college matters a lot—perhaps more than ever. Sorority can provide that **sense of belonging** in a new place. It's about **laughter**, lifelong **friendships**, and a family that has **your back no matter what**.

SORORITY IS ACCESSIBLE

Sorority life welcomes members based on what they want to contribute to the world around them. **Your values, what you stand for, and what you want to do in life** matters far more than where you come from or your socioeconomic status.

SORORITY LETS YOU MAKE A DIFFERENCE IN THE LIVES OF OTHERS

Being in a sorority is an invitation to help you be an **agent of change** in your community and in yourself. It's an opportunity to embrace perspectives and experiences different from your own, while making an impact on campus and developing leadership skills that can help you change the world—or at least your piece of it.

SORORITY IS WORTH IT

Joining a sorority also pays off where it counts—with **your future** and **your career**. Sorority members not only provide a network you can draw from for **internships** and **jobs**, but they can also help push you out of your comfort zone and encourage you to take advantage of opportunities you may never have considered.

BY THE NUMBERS

- The National Panhellenic Conference (NPC) has 26 NPC member organizations with nearly 400,000 undergraduate members across the US and Canada.
- More than 580 campuses have a College Panhellenic Association and nearly 670 campuses have at least one established NPC sorority chapter.
- More than \$6.6 million in scholarships were awarded to sorority members in 2022-23.
- In 2022-23, collegiate and alumnae members together donated more than \$28 million for philanthropy activity and volunteered more than a half-million hours.



Alpha Sigma Alpha Zeta Nu

“ASPIRE. SEEK. ATTAIN.”

NATIONAL FOUNDING:

November 15, 1901 at Longwood University in Farmville, Virginia

LOCAL FOUNDING:

March 15, 1997

MINIMUM GPA EXPECTATION:

2.75

PHILANTHROPIES:

- Special Olympics
- Girls on the Run
- The Alpha Sigma Alpha Foundation

CONNECT WITH US!

 asa_zetanu

COST PER SEMESTER:

New Member: \$321 per semester

Active Member: \$360 per semester

New member fees include initiation fee, badge, composite, chapter retreat, chapter letter shirts, and various activities and events



Alpha Sigma Tau Delta Theta

“ACTIVE, SELF-RELIANT, TRUSTWORTHY”

NATIONAL FOUNDING:

November 4, 1899 at Michigan Normal College in Ypsilanti, Michigan

LOCAL FOUNDING:

April 19, 1997

MINIMUM GPA EXPECTATION:

2.75

PHILANTHROPIES:

- American Heart Association
- Women's Wellness Initiative
- Dress for Success
- Girls who Code

CONNECT WITH US!

 ast_moravian

 ASTDeltaTheta

 astmoravian

 Alpha Sigma Tau - Moravian University

 moravian.alphasigmatau.org

COST PER SEMESTER:

New Member: \$517.35

Active Member: \$361.43

New member fees include initiation fee, badge, local dues (Panhellenic fees), insurance, technology, parlor housing fee, and shirts



Sigma Sigma Sigma Eta Lambda

“FAITHFUL UNTO DEATH”

NATIONAL FOUNDING:

April 20, 1898 at Longwood University in Farmville, Virginia

LOCAL FOUNDING:

March 14, 2001






MINIMUM GPA EXPECTATION:

2.5

PHILANTHROPIES:

- Tri Sigma Foundation
- March of Dimes

CONNECT WITH US!

-  trisigma_moravian
-  trisigmaetalambda
-  trisigmamoravian
-  Sigma Sigma Sigma of Moravian University
-  moravian.trisigma.org

COST PER SEMESTER:

New Member: \$460

Active Member: \$300

New member fees include badge, national fees, chapter letters, and various activities and events



Zeta Tau Alpha Kappa Iota

“SEEK THE NOBLEST”

NATIONAL FOUNDING:

October 15, 1898 at Longwood University in Farmville, Virginia

LOCAL FOUNDING:

March 15, 1997

MINIMUM GPA EXPECTATION:

2.6

PHILANTHROPY:

- Breast Cancer Education and Awareness

CONNECT WITH US!

-  ztamoravian
-  Zeta Tau Alpha - Kappa Iota
-  moravian.zetataualpha.org

COST PER SEMESTER:

New Member: \$527

Active Member: \$326

New member fees are inclusive of a new member and sisterhood experience that supports leadership skills and mental health, national fees, retreats, and formal



Participation Requirements & Expectations

A POTENTIAL NEW MEMBER (PNM) MUST:

- Be a full-time Moravian University student
- Completed at least one semester of college
- Have a cumulative GPA of 2.5 or higher

Individual chapters may have a higher GPA expectation for membership.

REMEMBER:

- Potential New Members (PNMs) must register with Panhellenic to participate.
- Registering does not guarantee a bid.
- PNMs are expected to attend the Recruitment Orientation on Tuesday, January 21.
- PNMs are expected to attend all recruitment events to which they are invited.
- In the case of illness, religious holiday, athletic commitments, or other conflict, PNMs are required to notify the Dean of Campus Life, who will inform the chapter.
- Failure to notify will render the PNM ineligible to continue participating in recruitment.
- PNMs may participate until they receive no more invitations.
- If a PNM signs a Bid Card, the PNM is not eligible to accept a bid from another Panhellenic sorority for one calendar year.

CONTACT WITH CHAPTERS BEGINNING SUNDAY, JANUARY 12:

- Sorority members should actively promote the overall sorority experience and membership opportunities.
- Sorority members should not actively recruit PNMs to one organization. Conversations and interactions should promote the Panhellenic experience and focus on encouraging PNMs to register for the process.
- PNMs may not visit a sorority house, a sorority member's residence, or attend a recruitment event outside of the Primary Recruitment schedule. PNMs may only visit a sorority during scheduled recruitment events.
- Sorority members, including alumnae, may not visit a PNM in their residence prior to or during Primary Recruitment.
- Sorority members may not purchase any items, including gifts, for a PNM, and a PNM may not purchase any items, including gifts, for a sorority or its members.
- PNMs may not leave recruitment events with any items.
- Sorority members may not verbally promise, offer, or imply, directly or indirectly, that a PNM will receive a bid.
- If a chapter needs to contact a PNM during Primary Recruitment, the sorority should contact the Dean of Campus Life. There is to be no direct contact beginning Friday, January 24, at 6 p.m. until Sunday, January 26, at 7 p.m.

Important Terminology

ACTIVE MEMBER: A member who has been initiated and is active at the collegiate level.

ADVISOR: An alumnae member who serves as a resource for the chapter.

ALUMNI/AE: Members of an organization who have graduated.

BADGE: Also known as a pin; an item of jewelry given to members upon initiation. The badge is to be worn with business attire, usually over the heart and above other pins.

BID DAY: Last day recruitment in which potential new members receive formal invitations to join an organization.

CHAPTER: A branch of an organization established at a campus. Each has their own name, usually designated by Greek letters.

CHAPTER MEETING: A weekly meeting held to discuss chapter business.

CONTINUOUS OPEN RECRUITMENT: If a chapter does not reach quota or total, they may offer additional bids.

DUES: Cost of joining an organization which may include costs of operation, events, activities, and other expenses.

FOUNDER'S DAY: An event to highlight the founding of an organization and celebrate its history.

FRATERNITY: A group of people brought together by mutual interests. Generally thought of as a group of men, but also refers to co-ed organizations. Many sororities are officially fraternities.

GREEK WEEK: An organized week of activities to unite Greek organizations, normally held during the spring semester.

HEADQUARTERS: (Inter)national office responsible for making policies and providing guidance to its chapters.

INITIATION: A ceremony where a new member becomes an active member of the organization. Initiation ceremonies are private and vary for each organization.

NATIONAL PANHELLENIC CONFERENCE (NPC): The organization that governs the 26 national Panhellenic organizations.

NEW MEMBER: Period of membership after receiving and accepting a bid, but prior to initiation.

NEW MEMBER PIN: A distinctive badge worn on the chest designating a new member of a chapter for the period of time between bid acceptance and initiation.

PANHELLENIC: The governing body of the sororities of a campus.

PHILANTHROPY: A nonprofit agency, cause, or project that a chapter supports through financial contributions and/or service.

POTENTIAL NEW MEMBER (PNM): A person interested in joining an organization who participates in recruitment.

PREFERENCE: Also known as Pref; a final party during Recruitment. More formal than previous rounds and usually includes a ritual that potential new members can participate in.

QUOTA: The number of new members a chapter can extend bids to. Determined by dividing the total number of potential new members attending Preference by the number of chapters.

RITUAL: A private ceremony of an organization, which only initiated members and/or new members may attend.

TOTAL: The maximum number of members a chapter can have.



ΑΣΑ • ΑΣΤ • ΣΣΣ • ΖΤΑ