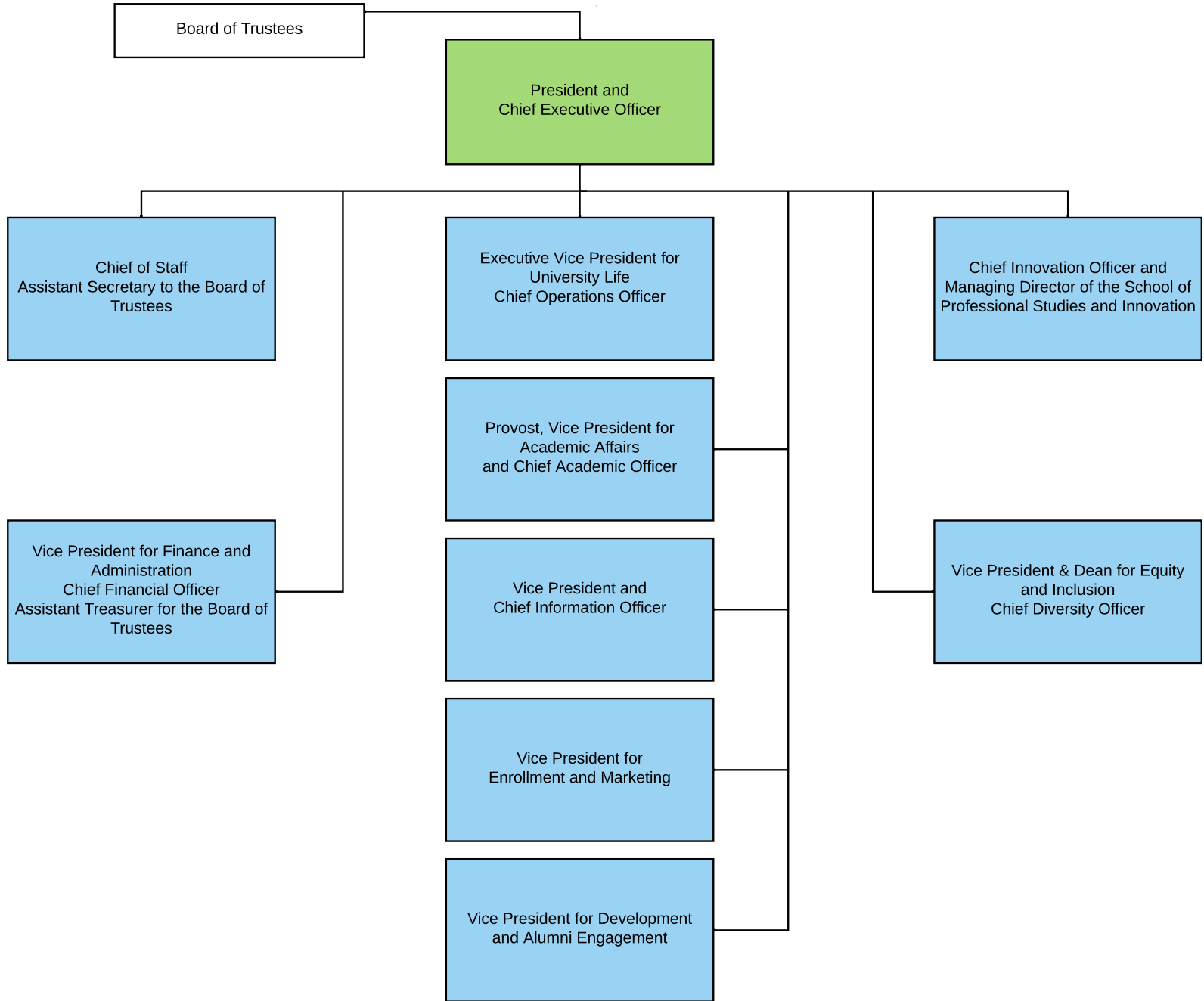
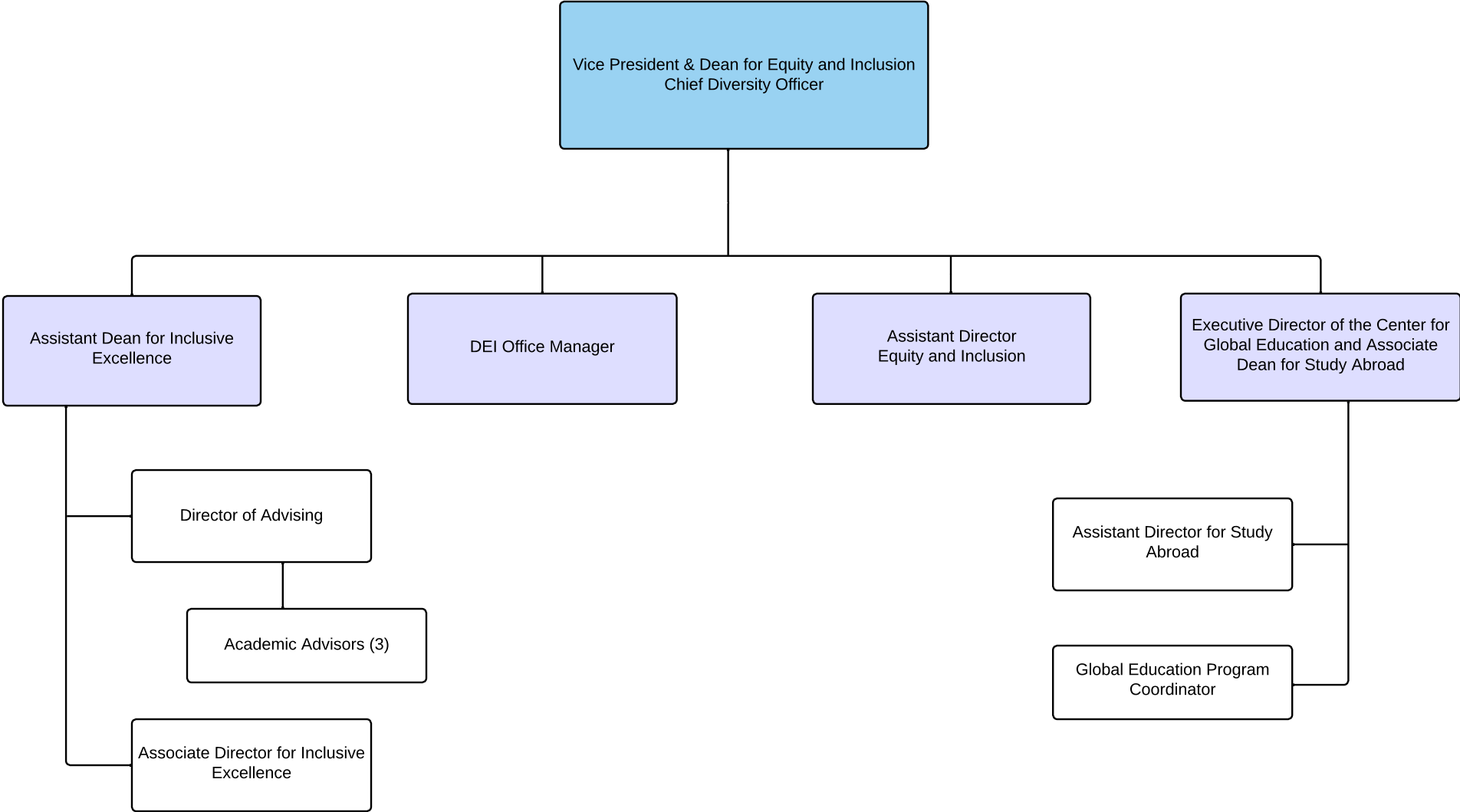


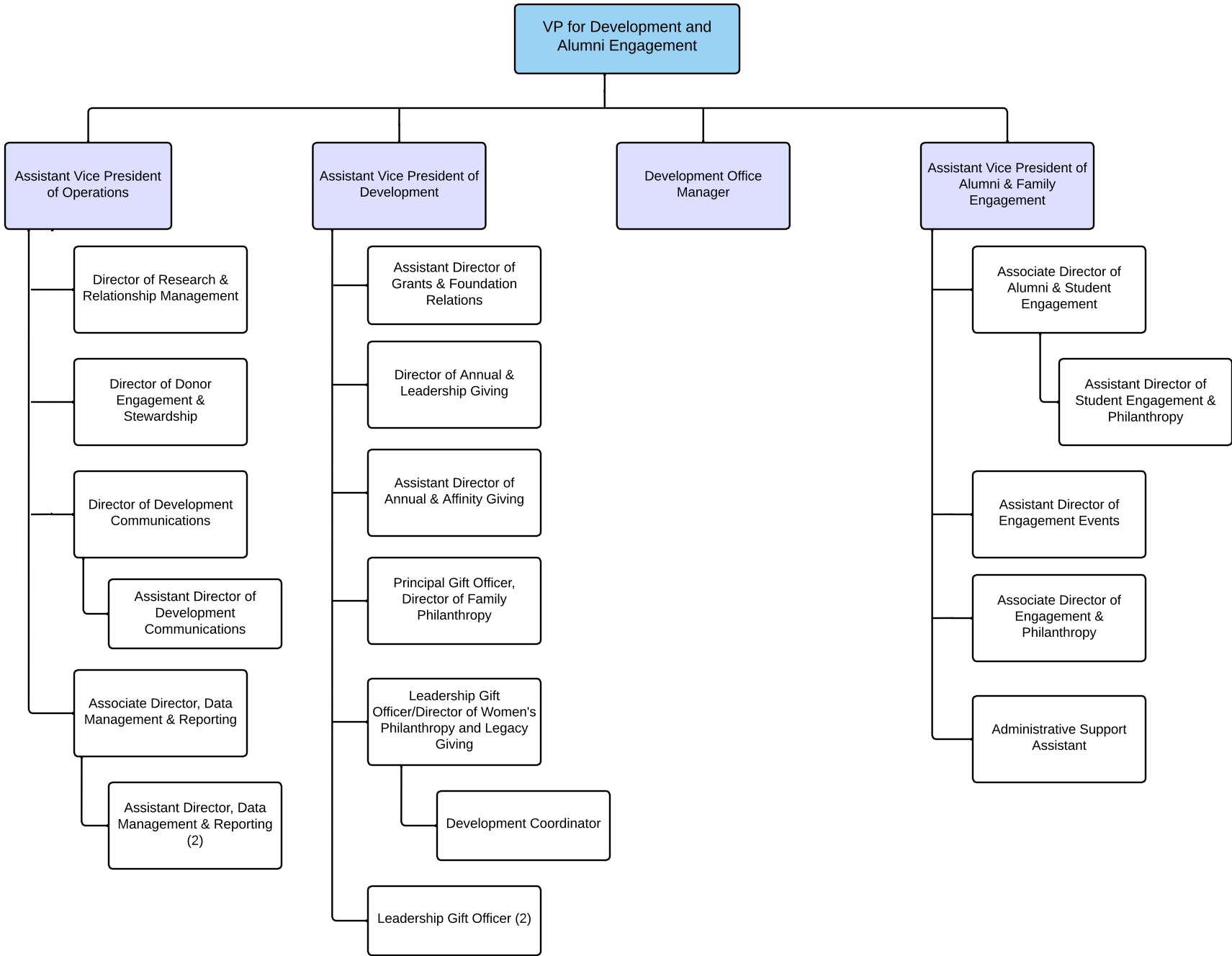
# President's Office



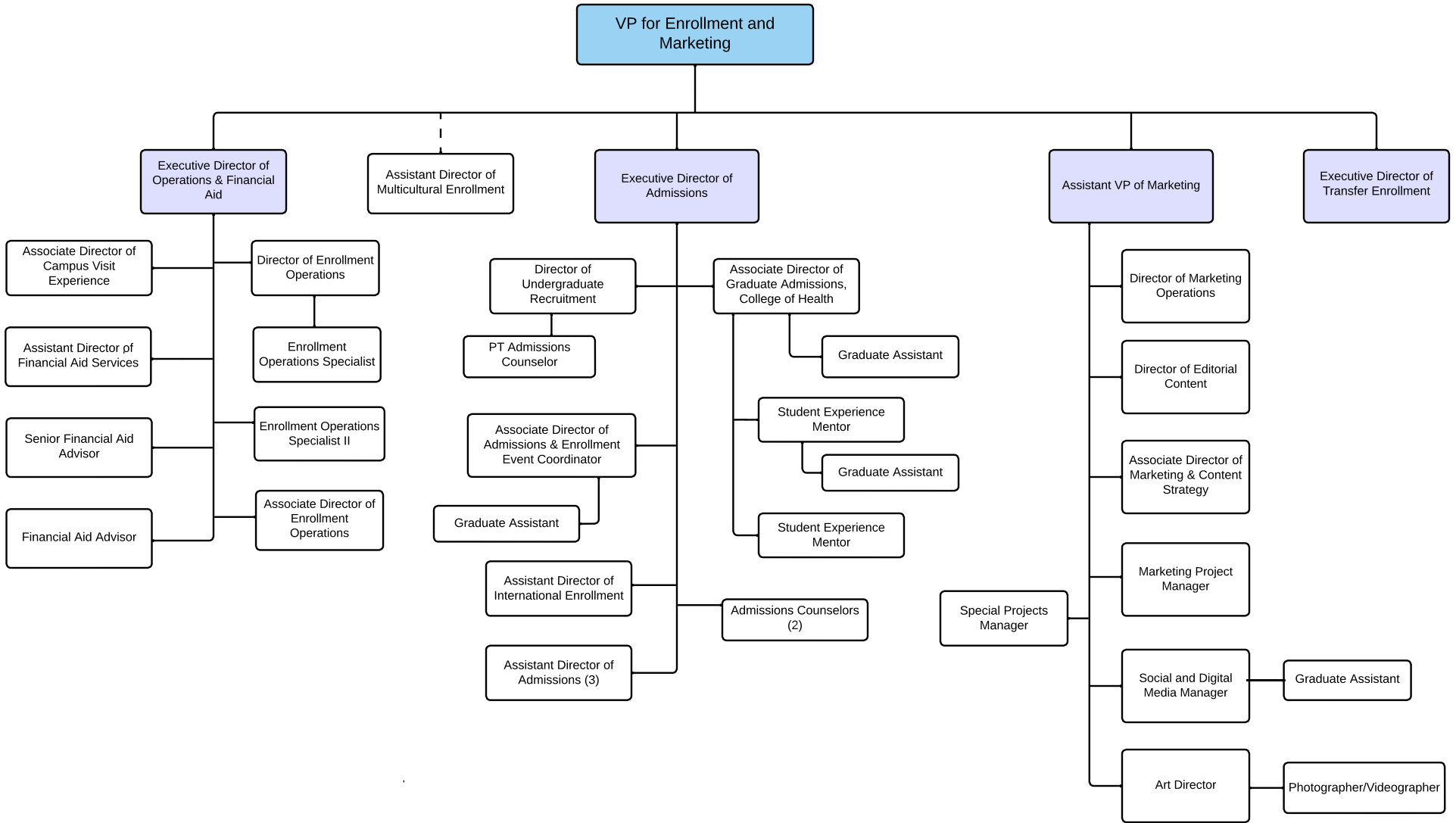
# Center for Inclusive Excellence



# Development and Alumni Engagement

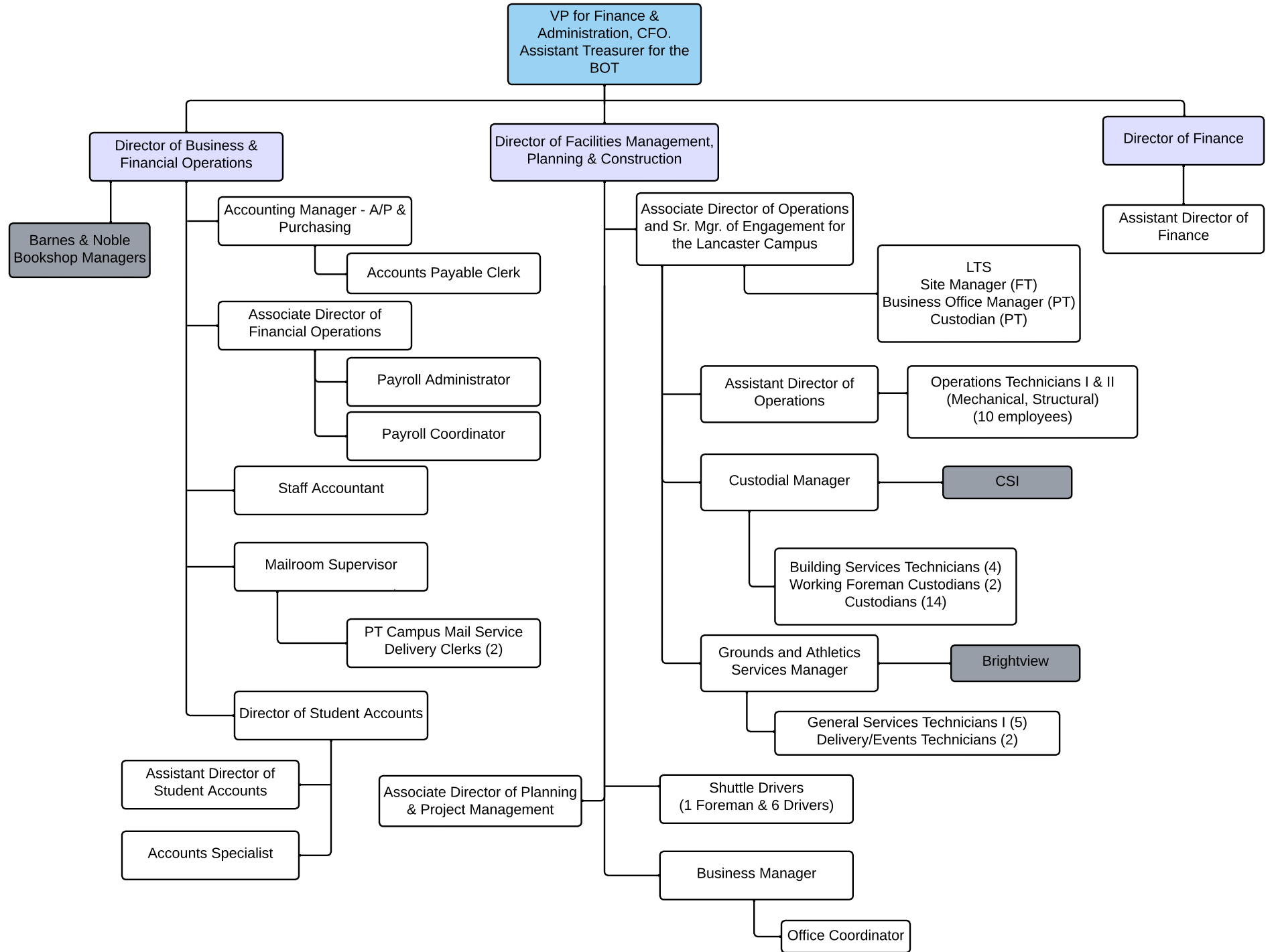


# Enrollment & Marketing



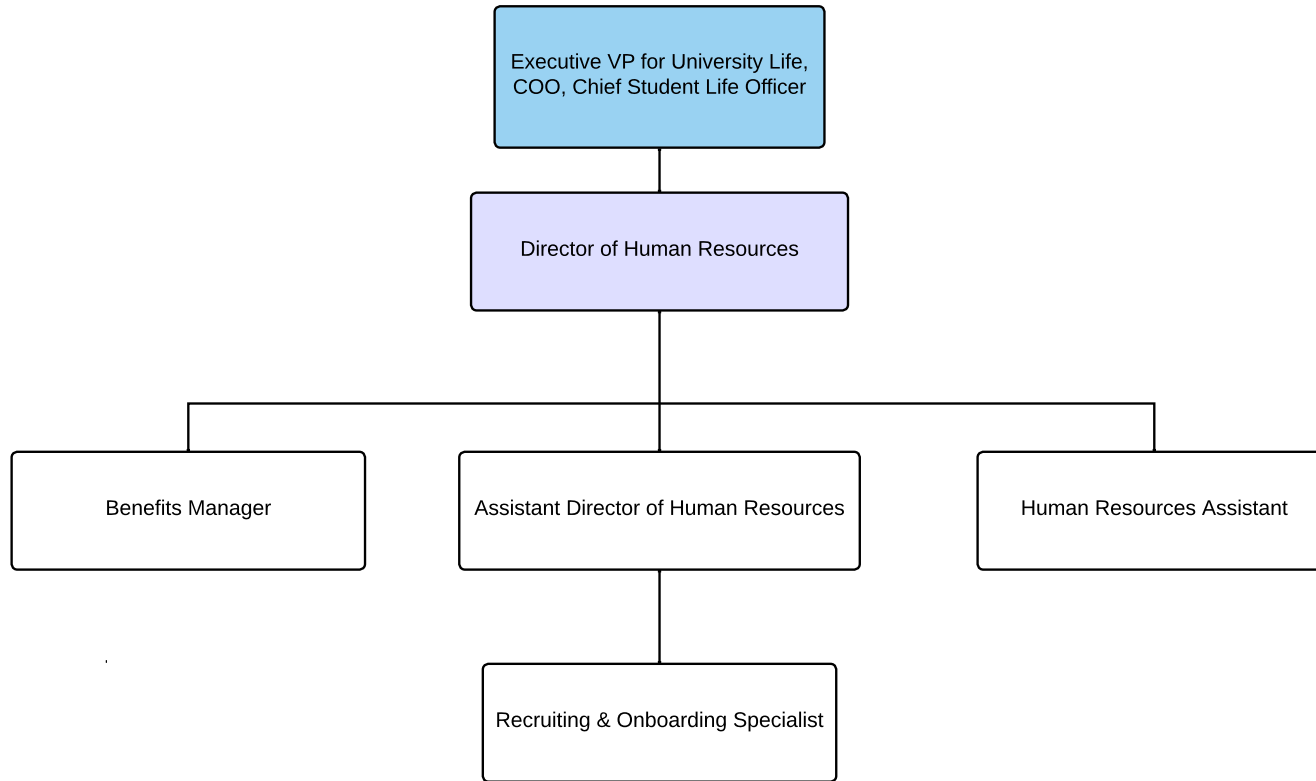
Subcontractor

# Finance & Administration

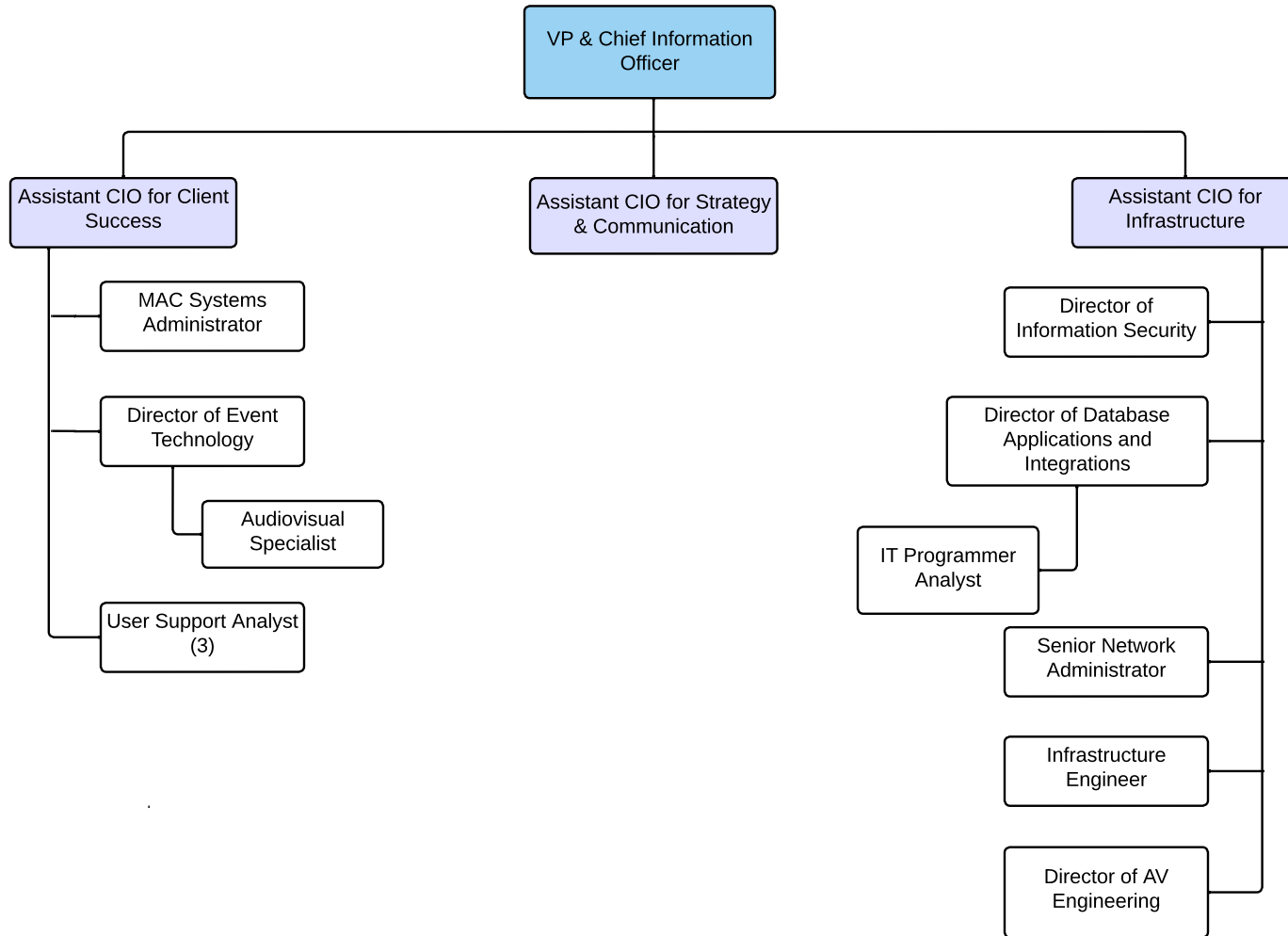


# Human Resources

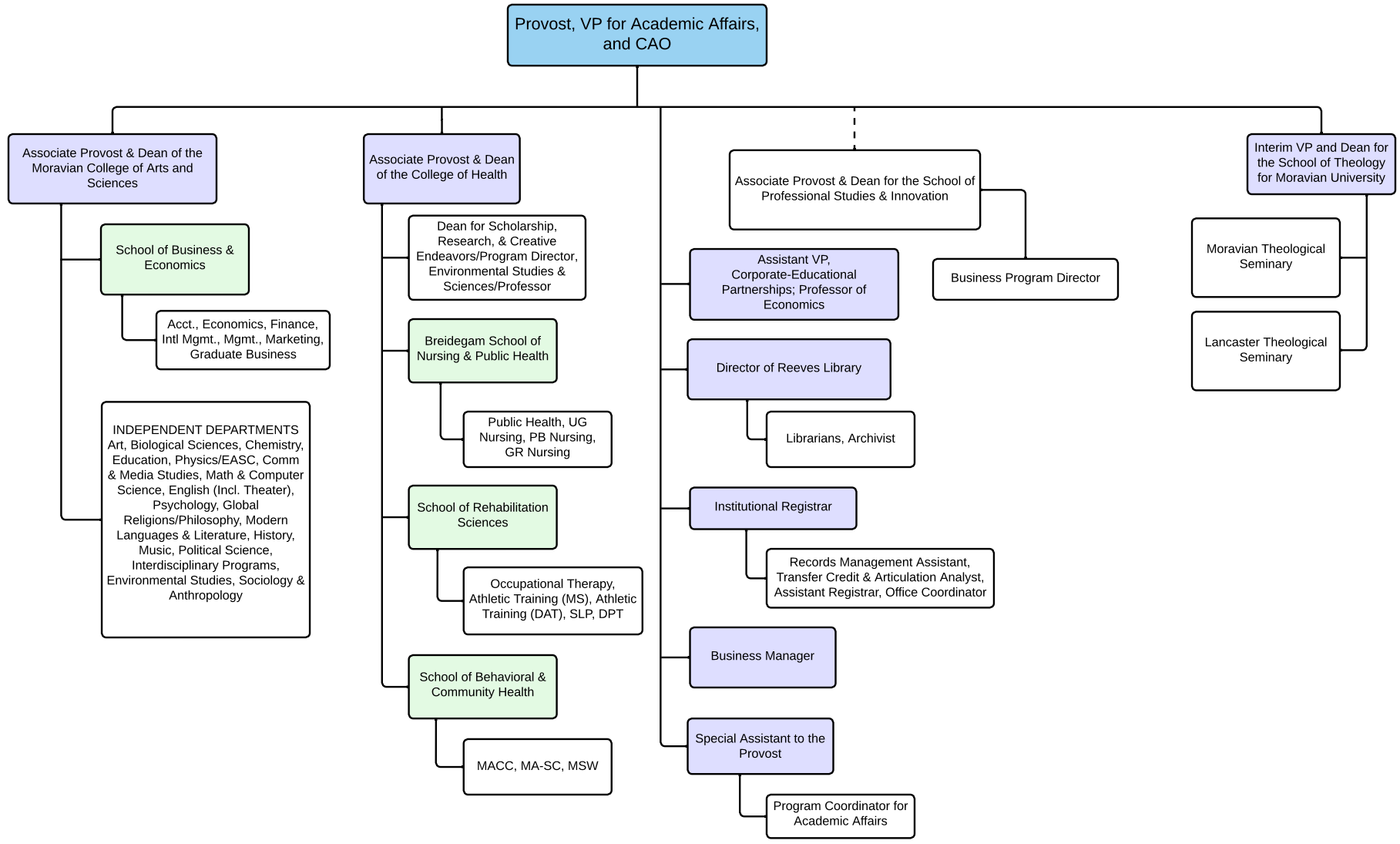
---



# Information Technology

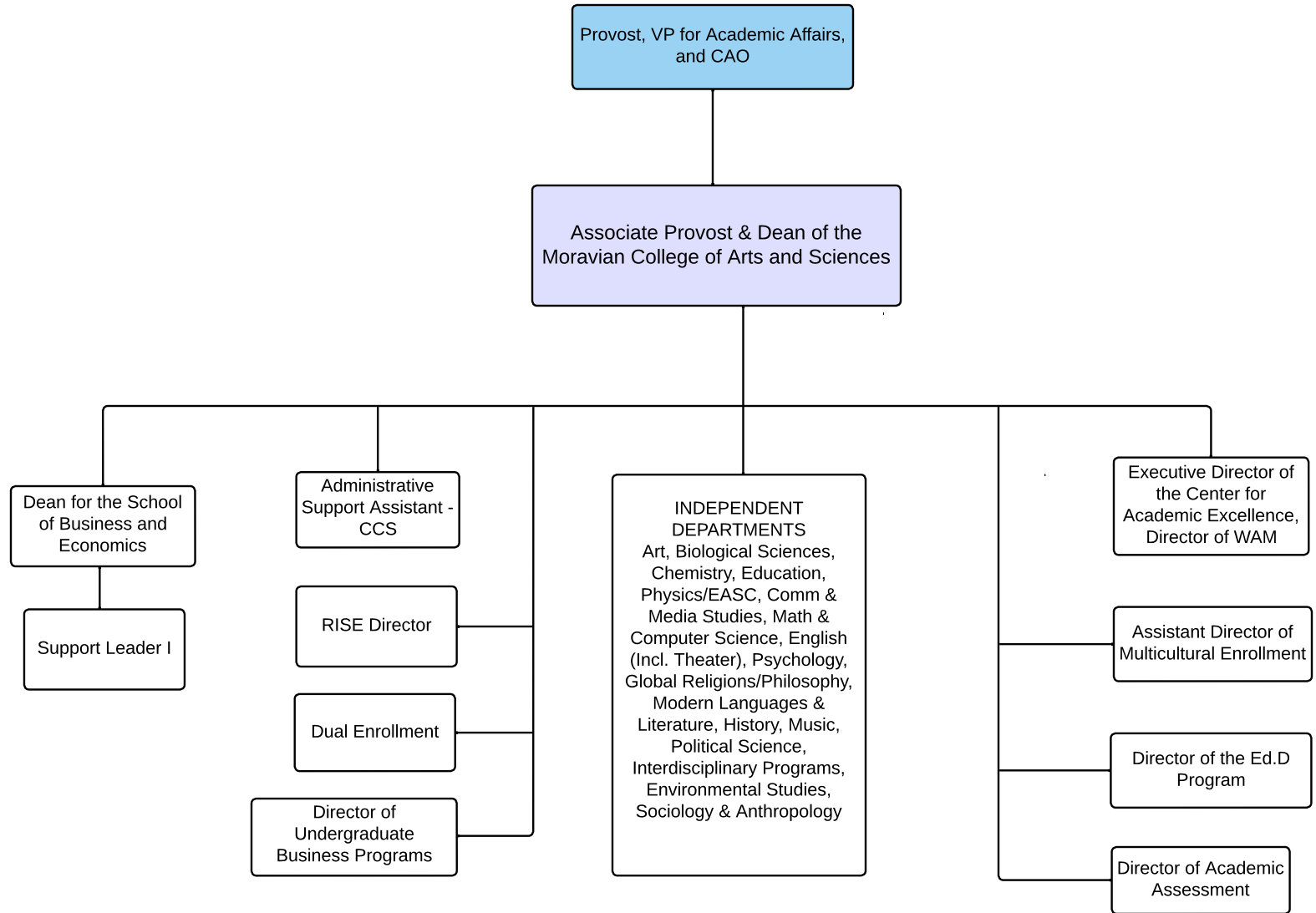


# Provost Office

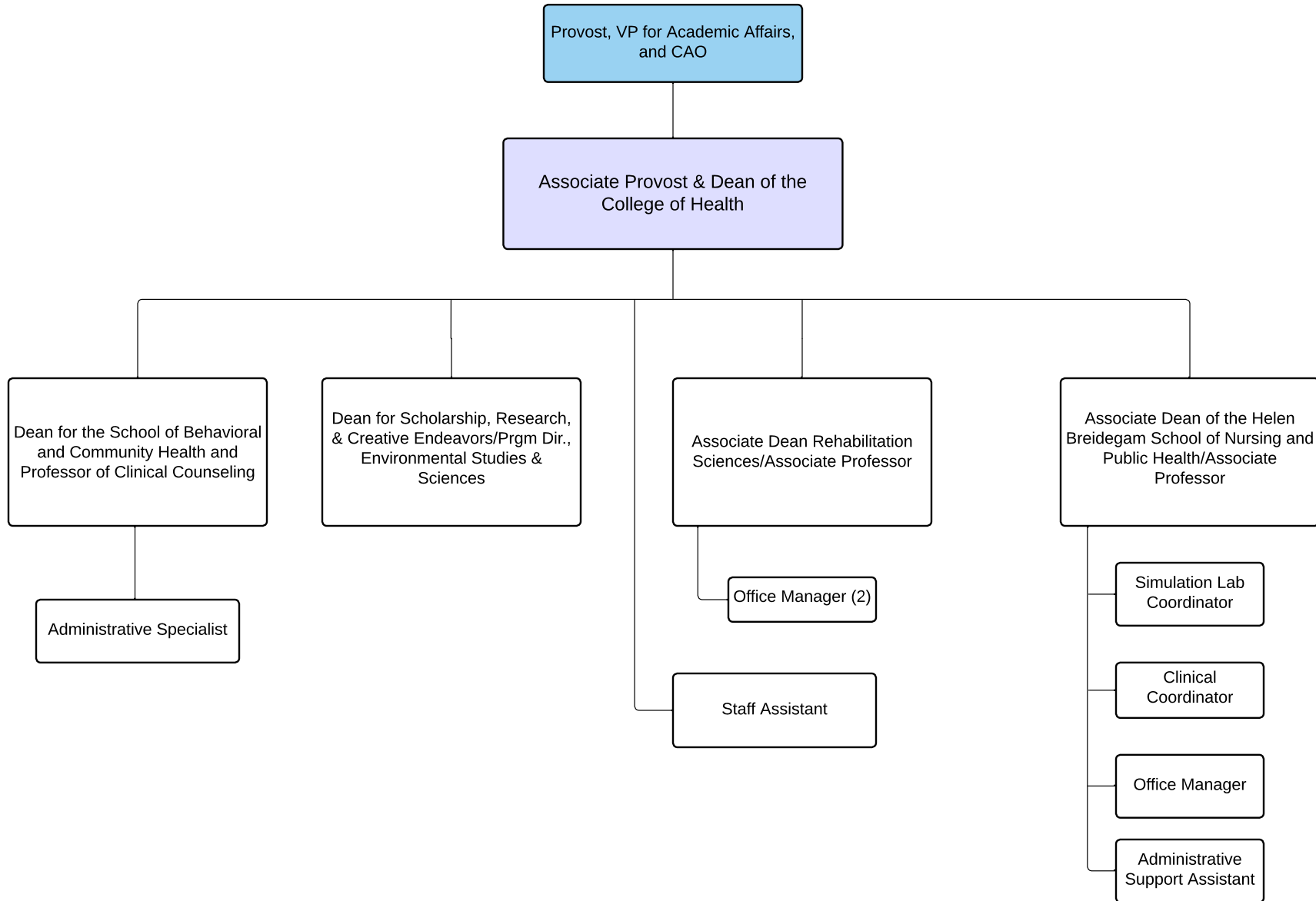




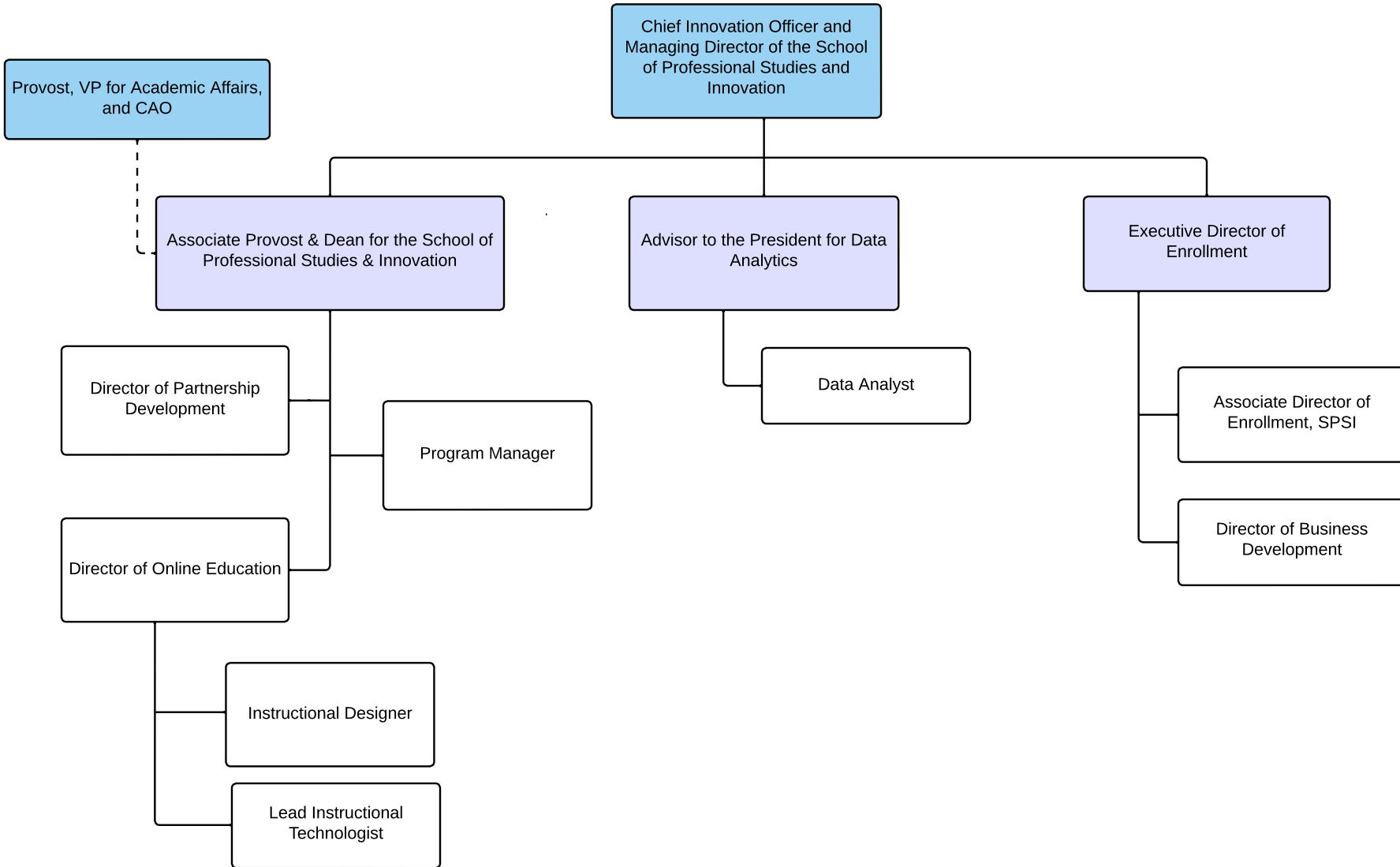
# College of Arts and Sciences



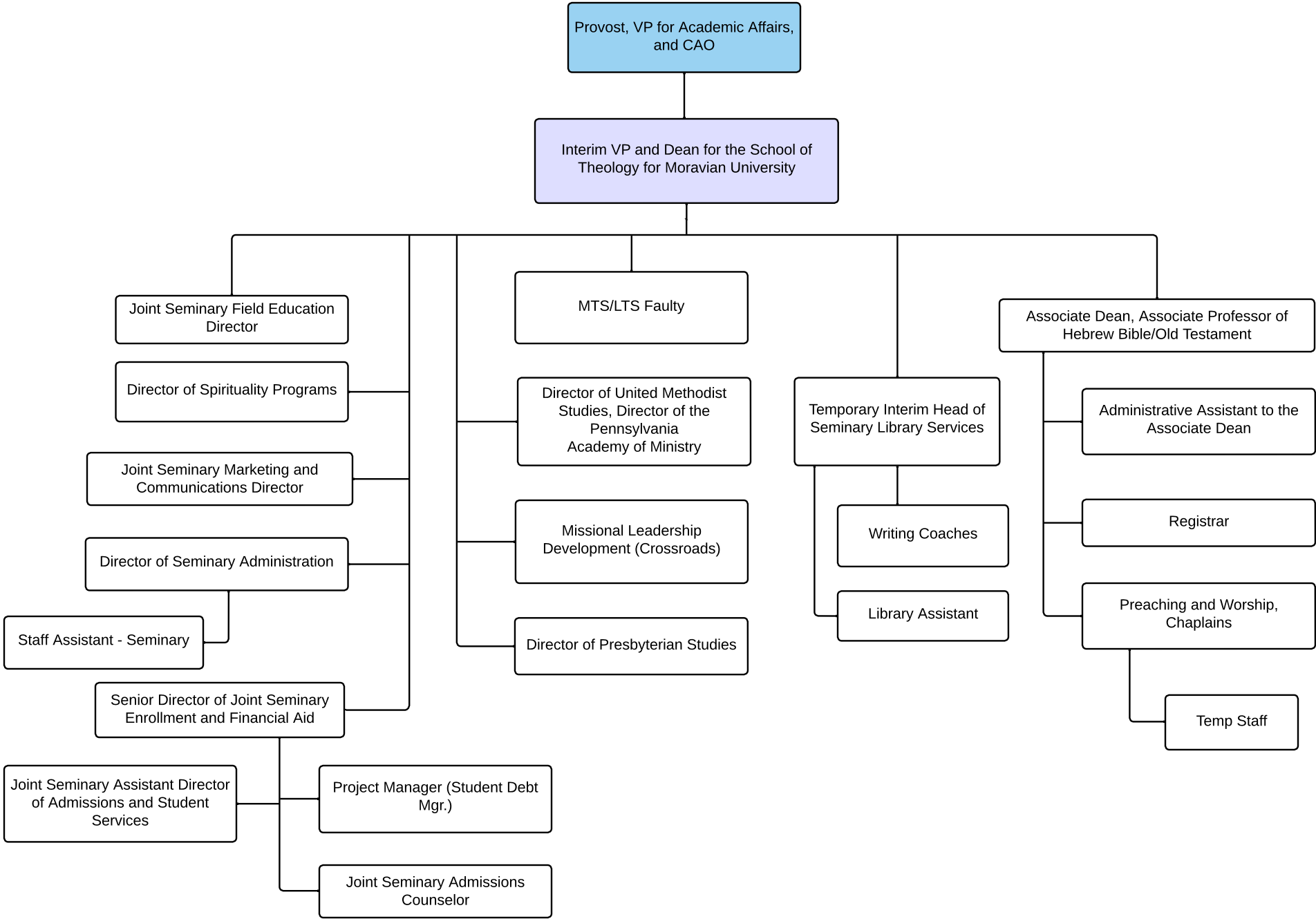
# College of Health



# School of Professional Studies and Innovation



Moravian Theological Seminary  
Lancaster Theological Seminary



# Student Life

Subcontracted

On Call\*

Executive VP for University Life,  
COO, Chief Student Life Officer

Executive Administrative  
Assistant for Student Affairs

SODEXO Food  
Service Employees  
Catering

Counsel

Health Center

Chief of Police\*

Chaplain\*

Director of Event  
Management

Executive Director of  
Career Development  
and Civic  
Engagement

Dean of  
Campus Life\*

Director of  
Human Resources

Dean for  
Compliance, Training  
& Development\*

Dean for Community  
Wellness\*

Director of Athletics  
& Recreation, Head  
Women's Basketball  
Coach

Lieutenant\*

Assistant Director  
for Spirituality &  
Inclusion

Assistant Director of  
Event Management (2)

Assistant Director of  
Career  
Development

Director of Campus  
Life\*

Associate  
Director of  
Student  
Engagement

Director of Veteran  
& Military Services

Director of Operations &  
Outreach

Men's Lacrosse, Women's  
Field Hockey, Men's  
Basketball, Football,  
Women's Soccer

Sergeants

Campus  
Security  
Officer

Assistant Director of  
Career  
Development

Office Manager

Assistant Director  
of Residence Life\*

Environmental  
Health and Safety  
Officer

Office  
Manager

Community  
Support  
Coordinator

Coordinator of  
Athletic Operations

Police Officers

Director of Civic  
Engagement

Senior Career  
Development  
Strategist

Director of Housing\*

Equal Opportunity &  
Title IX Coordinator

Director of Clinical Services  
and Multicultural Specialist\*

Associate Athletic  
Director

Office Manager

Assistant Director of  
Civic Engagement

Career  
Development  
Strategists (2)

Assistant  
Director of  
Housing\*

Civil Rights  
Investigators (7)

Assistant Director of  
Counseling (2)\*

Fitness Center, Softball,  
Baseball, Strength and  
Conditioning, Volleyball,  
Men's Soccer

Police  
Dispatchers

Community School  
Coordinator, William Penn

Senior Career  
Development  
Strategist

Director of Disability and  
Accommodation  
Services

Staff Counselor

Equipment  
Manager

Activity Coordinator -  
William Penn

Career  
Development  
Strategists (2)

Temporary Disability  
Support Coordinator

Associate Director of  
Student Accountability &  
Conflict Transformation\*

Assistant Athletic  
Director

Community School  
Coordinator, Thomas  
Jefferson

Activity Coordinator -  
Thomas Jefferson

Assistant Director of  
Athletic Communications

Track & Field, Cross  
Country, Swimming, Golf,  
Women's Lacrosse

Director of Athletic  
Communication

Director of  
Student-Athlete  
Development, Director  
of Tennis